

Oklahoma City Development Updates & Economic Conditions



Economic Conditions

- Unemployment rate of 2.8% (16th lowest among large metros)
- Oklahoma City metro accounts for 41% of Oklahoma GDP (35% in 2001)
- City of OKC now #20th largest city (ranked #37 in 1970); one of only 14 cities to add 100,000 people from 2010-2020
- Over 170,000 people added to metro from 2010-2020
- Oklahoma ranked #10 best for highest net migration in 2022

Economic Conditions

- For Dec 2022, 48,000 job postings in OKC metro
- \$122 Million in ARPA funds awarded to OKC
- OKC metro housing starts in 2022 down 21% from prior year
- Cost of Living at 83.2 for OKC (about 16% below the nation)

Where did we grow last year (2022)?

Strongest Job Growth

OKC MSA

Mining/Oil & Gas (+11.6%)

Transportation, Warehousing (+7.6%)

Wholesale Trade (+6.9%)

Administrative Services (+5.8%)

Largest Job Declines

OKC MSA

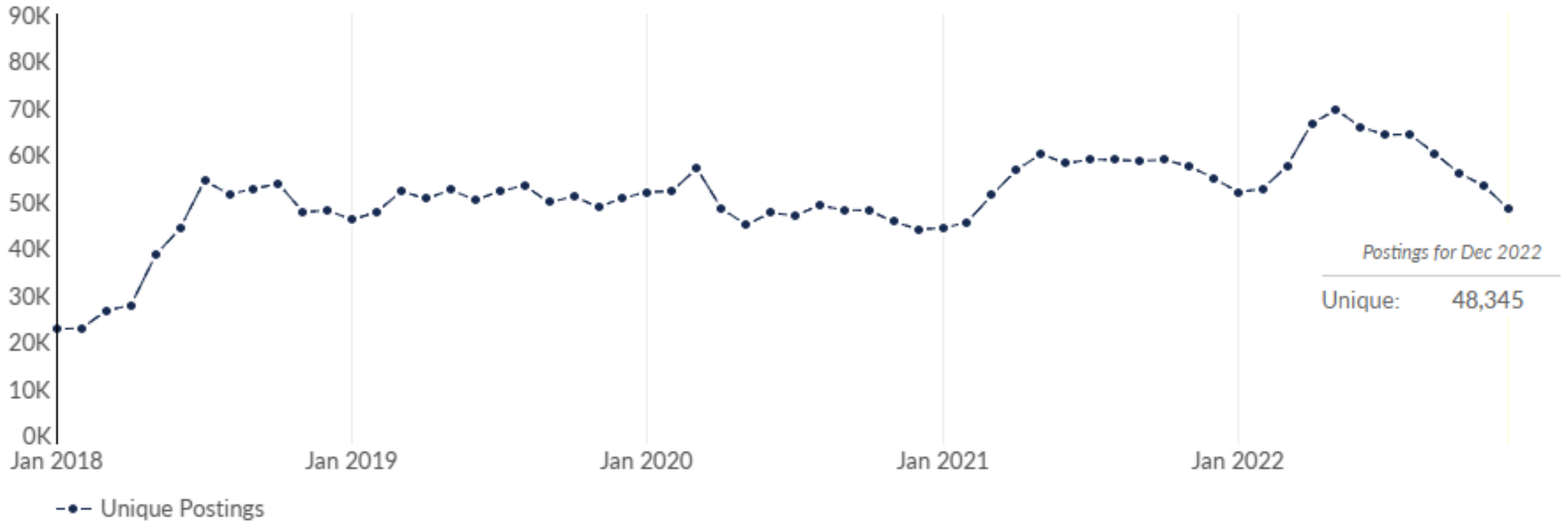
Information (-3.5%)

State Govt (-1.1%)

Financial Activity (-0.2%)

48,000 current job postings in December 2022

Oklahoma City MSA



Source: Emsi, 2022.4 (Active Postings December 2022); Oklahoma City MSA

Who's Hiring (December 2022)

Company	Total/Unique (Dec 2022)
SSM Health Care	5,568 / 1,469
University of Oklahoma	2,946 / 1,056
Mercy Health	5,693 / 803
Integrus Health	1,102 / 534
Oklahoma University Medical Center	1,200 / 414
Norman Regional Hospital	1,735 / 406
Dollar General	501 / 354
KPMG	1,454 / 313
Boeing	1,257 / 263
Walmart	833 / 260

Regional-Assisted Companies 2022 Wins



5,488
JOBS

\$262
Million
Payroll



\$843
Million Capital
Investment

New Relocations and Expansions



Heartland



Regional Project Pipeline

December 2022

85 Active Projects

56,080
JOBS



16 MILLION
SQUARE FEET



\$31 BILLION
CAPITAL INVESTMENT

\$1.0
Billion
PAYROLL



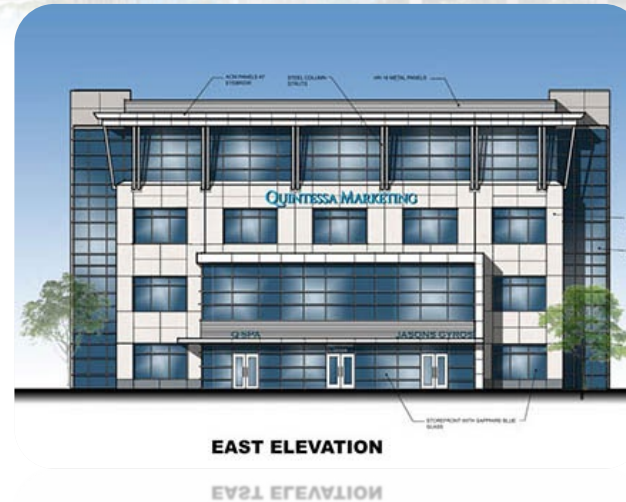
Note: Not all projects provide the key pieces of information listed above; December 2022 Pipeline; Greater Oklahoma City Regional Partnership

GROWTH - WHAT'S NEW & WHAT'S NEXT

January 2023



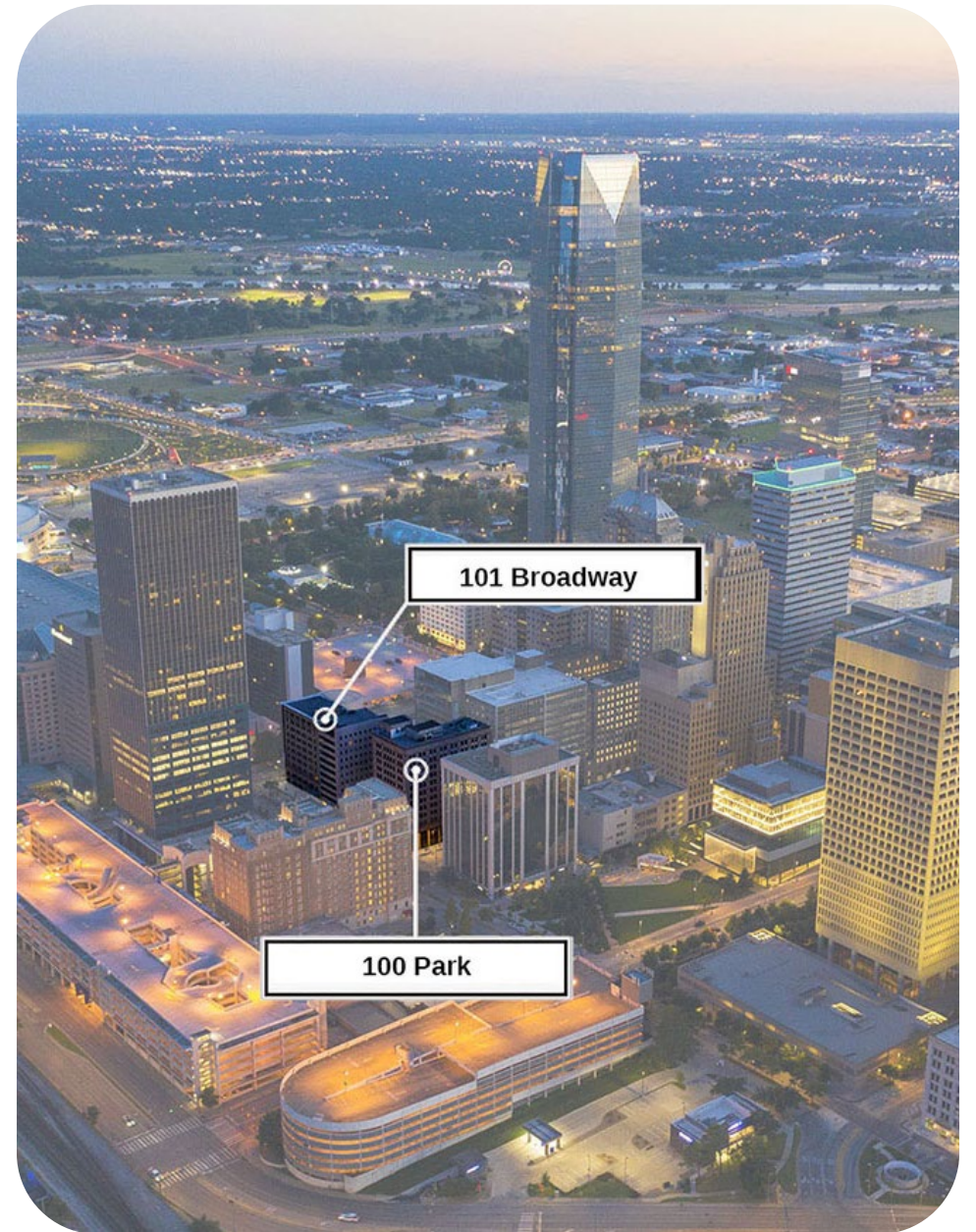
Office Buildings



The National (First National Center)



The Harlow



Convergence



GREATER OKLAHOMA CITY CHAMBER

OKANA Resort & Indoor Water Park



EastPoint



Restaurants & Bar Openings

Downtown/Core



Restaurants & Bar Openings

Northside



Retail Update



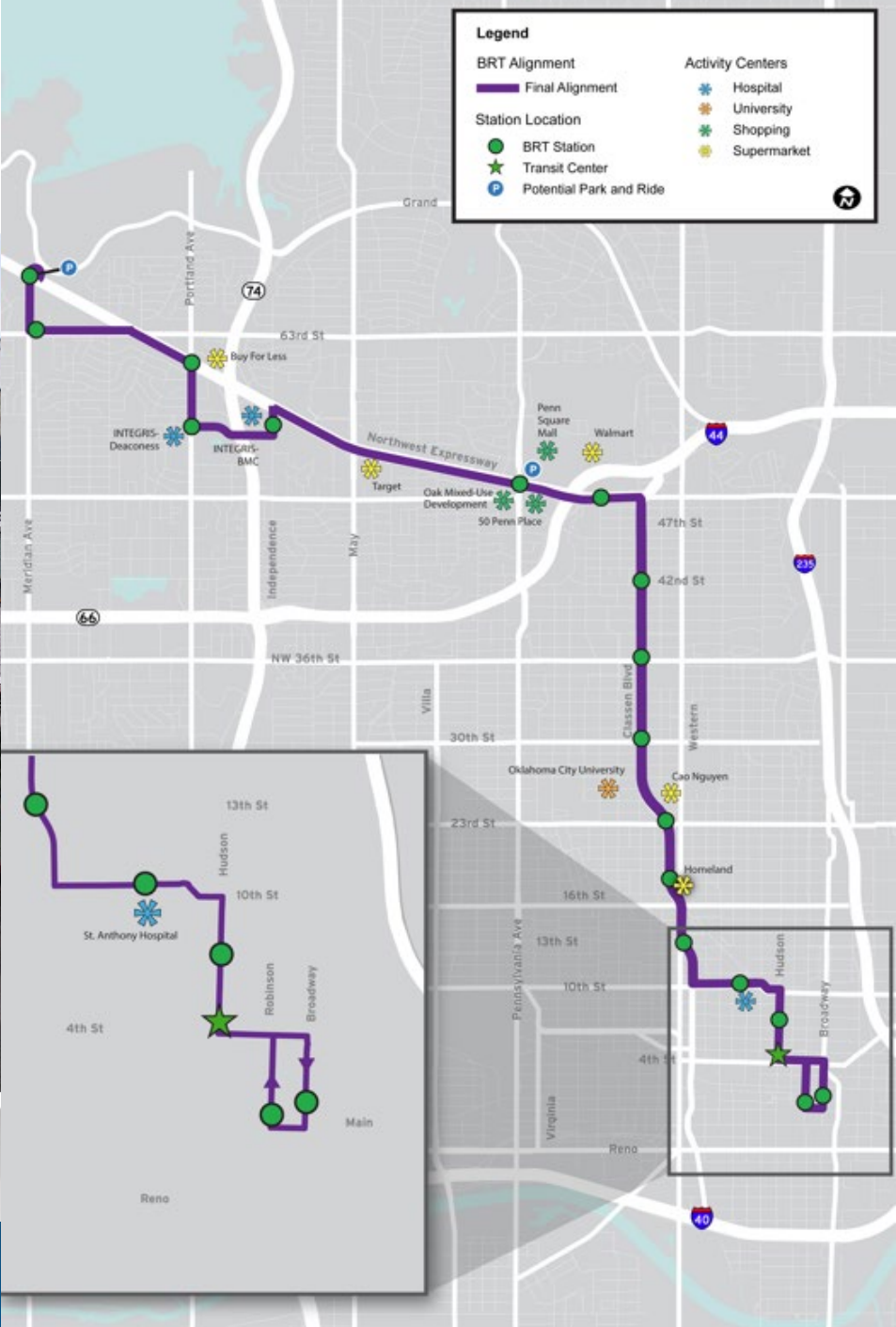
The Oak



Rose Creek Plaza



Bus RAPID Transit



MAPS 4 Update



Better Streets Safer City Update



Civic Center Improvements



OKC Public Golf Course Improvements



Expedition Africa at the OKC Zoo



Oklahoma City Wranglers



COOP Ale Works



Icon Cinema



Andy B's



Grocery Stores



Convenience Stores



Stanley Rother Shrine



KC-46 Expansion



OKCPS passes \$1 Billion bond



Griffin Memorial Mental Hospital



**OKLAHOMA
CITY**

THANK YOU

Eric Long

elong@okcchamber.com



[@okcchamber](#)

www.OkCChamber.com

www.VeloCityOKC.com